

## Consultants in the following fields:

- Environmental Protection
- Water Supply Networks
- Sewage Collection Networks
- Runoff Water Collection Networks
- Irrigation Networks
- Flood Protection Studies
- Wastewater Treatment Facilities
- Water Treatment Facilities
- Automation in Water Distribution Networks
- Map Creation
- Laboratory Analysis of Water and Wastewater
- River Basin Relocation
- Shore Protection from Destruction and Erosion
- Shore Remediation
- Fish Port Design
- Marinas Design
- Moorings and Commercial Ports
- Land Survey Studies
- Special Buildings and Structures
- Small Power Stations (Hydroelectric)
- Water Reservoirs
- Dams
- Solid Waste Management
- Construction Management
- Economic Feasibility Studies
- Development Studies

**METAXATOS**  
& ASSOCIATES

12 ELIKONOS STR., GR-152 34 HALANDRI, ATHENS, GREECE, TEL.: 210 683 9483-84, FAX: 210 683 9485  
e-mail: [info@hydrema.gr](mailto:info@hydrema.gr)  
[www.hydrema.gr](http://www.hydrema.gr)

MIRKOR

Water supply of a small Hydroelectric station in Mikro Horio, Evrytania.

**METAXATOS**  
& ASSOCIATES

**P. H. METAXATOS & ASSOCIATES CONSULTING ENGINEERS**

Center for the design of city infrastructure  
Center for Environmental Protection  
Center for Marine Protection

The firm METAXATOS & ASSOCIATES CONSULTING ENGINEERS was established in 1989 from a team of experienced engineers who practice engineering in many parts of the world, in Europe, USA, Middle East, etc.

The firm is operating from self owned premises and owns adequate equipment for any kind of design and calculation of water and sewage related projects, and marine as well as for the monitoring and abatement of any kind of pollution from any source.

Since today, the office has executed consulting work for known organizations, Governmental Agencies, Private and Public firms. Some of these are UNOP, EU, WORLD BANK, Greek Government, Ministry of Public works, Water and Sewage Authority of Athens, Greek Army, Greek Navy, SATO S.A., ALEXANDER FASHIONS S.A., NIKAS S.A., KARNA S.A., AGROINVEST S.A., ETVA S.A., DEPOS S.A., MERCEDES BENZ, etc.



The firm operates also a laboratory for the analysis of water and wastewater, and marine parameters.

**POLLUTION PREVENTION**

Considers all polluting parameter and designs special projects for the prevention and the remediation of pollution from domestic and industrial wastewaters, from wastes, toxic wastes, agricultural wastes, solid wastes, etc.

**FLOOD PREVENTION**

Examines statistical data and on site conditions in order to design flood prevention works in the cities and elsewhere.

**SHORE MANAGEMENT**

Examines currents and wave characteristics as well as wind and other climate conditions and applies methods for the prevention of shore destruction such as underwater special structures with sand sucks.



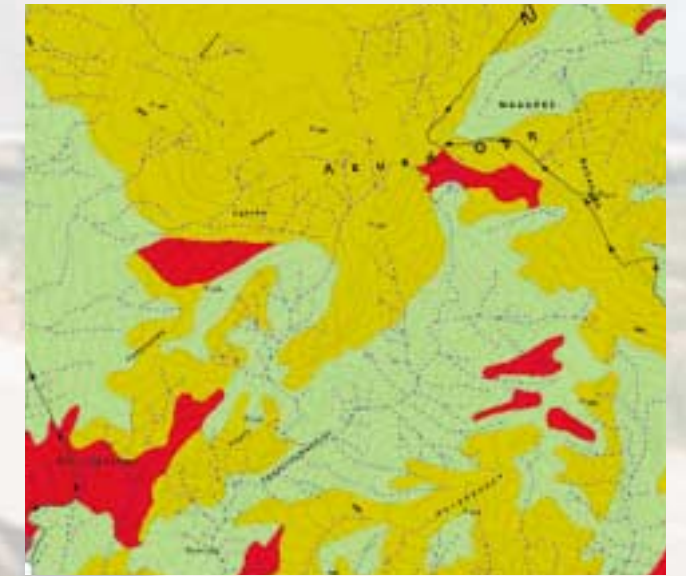
Water reservoir

**SOLID WASTE MANAGEMENT**

Estimation of waste characteristics, best route of collection, methods of treatment by traditional and modern solutions (pyrolysis etc.) and energy recovery.



Third degree treatment of wastewater for the city of Levadia



Land use map from satellite in South Crete



Design of modern marina in Halkoutsi



Design of flood prevention networks



Shore studied for protection near Preveza



Picture of silt movement in the sea in Western Greece